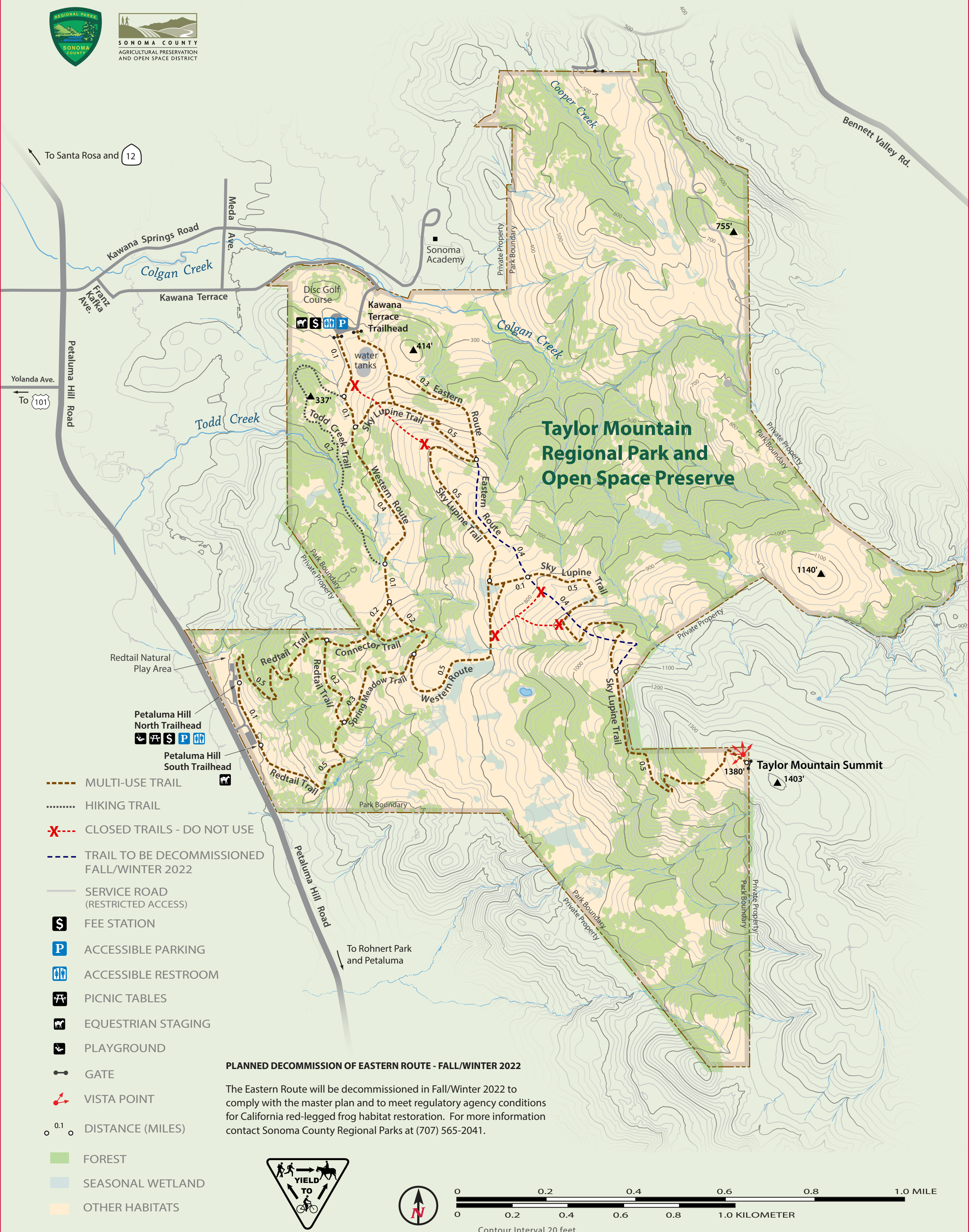


Taylor Mountain Regional Park and Open Space Preserve

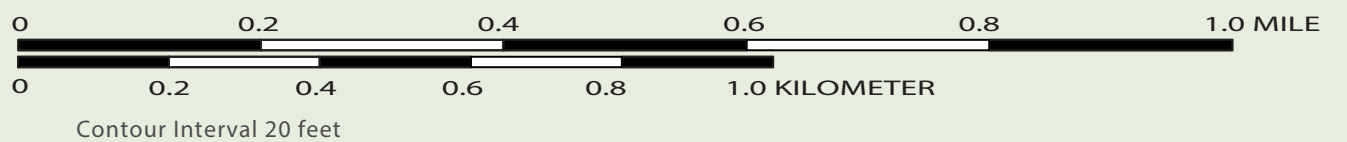
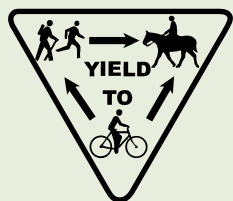


- MULTI-USE TRAIL
- HIKING TRAIL
- X--- CLOSED TRAILS - DO NOT USE
- TRAIL TO BE DECOMMISSIONED FALL/WINTER 2022
- SERVICE ROAD (RESTRICTED ACCESS)
- S FEE STATION
- P ACCESSIBLE PARKING
- ♿ ACCESSIBLE RESTROOM
- ♂ PICNIC TABLES
- 🐎 EQUESTRIAN STAGING
- 🎡 PLAYGROUND
- ⚡ GATE
- ↗ VISTA POINT
- 0.1 DISTANCE (MILES)

PLANNED DECOMMISSION OF EASTERN ROUTE - FALL/WINTER 2022

The Eastern Route will be decommissioned in Fall/Winter 2022 to comply with the master plan and to meet regulatory agency conditions for California red-legged frog habitat restoration. For more information contact Sonoma County Regional Parks at (707) 565-2041.

- FOREST
- SEASONAL WETLAND
- OTHER HABITATS



Taylor Mountain Regional Park & Open Space Preserve is a prominent Santa Rosa landmark offering panoramic views of the city and beyond. The park's 1,100 acres include sweeping grasslands, oak woodlands, and several creeks, and provide habitat for a variety of wildlife.

Recreational features include 6.4 miles of unpaved trails for hiking, biking and horseback riding and an 18-hole disc golf course. From the park's 1380-foot summit, visitors can see central Sonoma County, the Laguna de Santa Rosa, the Coast Range, the Mayacamas Range and other North Bay landmarks.

The park property was acquired by the voter-funded Sonoma County Agricultural Preservation & Open Space District and deeded to Sonoma County Regional Parks in 2013. The park currently has two entrances and trailheads on Kawana Terrace and Petaluma Hill Road. Taylor Mountain's master plan calls for the eventual development of 17 miles of trails, a children's play area, hike-in campsites, a visitor center, and other amenities as funding becomes available. The parkland was used for ranching for many years, and cattle grazing continues in the park.

This map is provided as a guide within the park. Reasonable effort has been made to ensure the accuracy of the map and data provided. The positional accuracy of the data is approximate and not intended to represent map accuracy from a published record survey. THE MAP AND ASSOCIATED DATA ARE PROVIDED WITHOUT WARRANTY OF ANY KIND, either expressed or implied, including but not limited to, the implied warranties of merchantability and fitness for a particular purpose. For detailed and updated information about accessibility of recreational opportunities or any other park information contact Sonoma County Regional Parks at (707) 565-2041.