

Taylor Mountain Regional Park and Open Space Phase 2 Trails Project

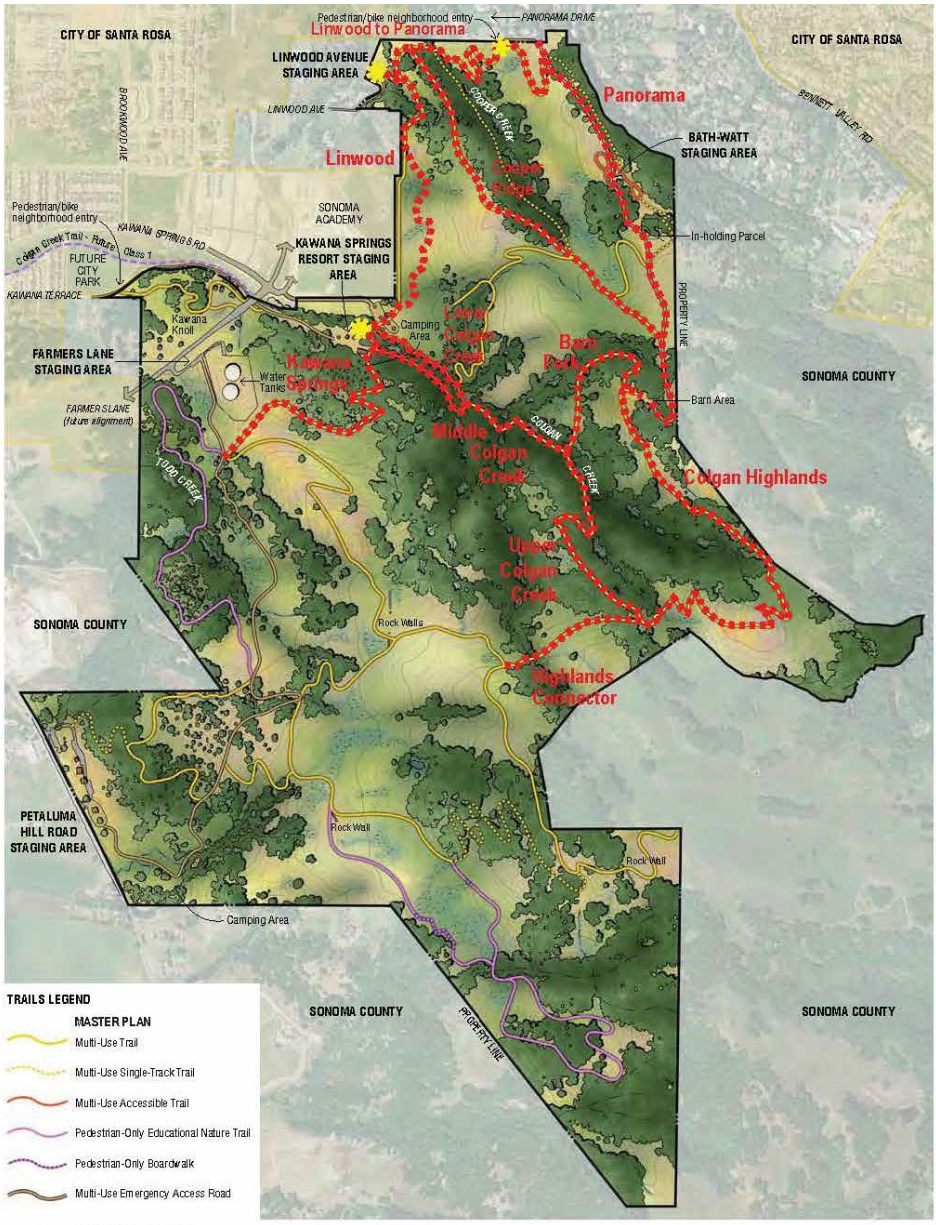


Phase 2 Trails Project: What & Why

- Continues the work approved in the 2012 Master Plan
- 8 miles of new multi-use trails and 3 new walk-in/bike in neighborhood access points
- provides public access to several hundred acres in the northeast area of the park that are not currently open to the public
- Funded by \$1.83 million Recreational Trails Program Grant and \$200,000 in local funds, donations and in-kind contributions

Project Overview & Timeline

- 2012 – Master Plan approval, property transferred to SCRPP
- 2015 – 2020 Phase 1 completed
 - Petaluma Hill Trailhead,
 - equestrian and vehicle parking,
 - Redtail Natural Play Area
- 2021 - 2022 Phase 2 in progress



Taylor Mountain Regional Park and Open Space Preserve
Site Plan
Proposed Trail and Access Point Construction

Phase 2 - Trail Construction



Taylor Mountain Regional Park and Open Space Preserve



Taylor Mountain Regional Park & Open Space Preserve is a prominent Santa Rosa landmark offering panoramic views of the city and beyond. The park's 1,100 acres include sweeping grasslands, oak woodlands, and several creeks, and provide habitat for a variety of wildlife. Recreational features include 6.4 miles of unpaved trails for hiking, hiking and horseback riding and an 18-hole disc golf course. From the park's 1380-foot summit, visitors can see central Sonoma County, the Laguna de Santa Rosa, the Coast Range, the Mayacamas Range and other North Bay landmarks.

The park property was acquired by the voter-funded Sonoma County Agricultural Preservation & Open Space District and decided to Sonoma County Regional Parks in 2013. The park currently has two entrances and trailheads on Kavana Terrace and Petaluma Hill Road. Taylor Mountain's master plan calls for the eventual development of 17 miles of trails, a children's play area, hike-in campsites, a visitor center, and other amenities as funding becomes available. The parkland was used for ranching for many years, and cattle grazing continues in the park.

This map is provided as a guide within the park. Responsible effort has been made to ensure the accuracy of the map and data provided. The positional accuracy of the data is approximate and not intended to represent map accuracy from a professional surveying process. THIS MAP AND ASSOCIATED DATA ARE PROVIDED WITHOUT WARRANTY OF ANY KIND, other expressed or implied, including but not limited to, the implied warranties of merchantability and fitness for a particular purpose. For detailed and updated information about accountability of recreational opportunities or all other park information, contact Sonoma County Regional Parks at (707) 565-2041.

Prep for Decommission

Created a new trail alignment to allow the decommission of the Eastern Route which is required during Phase 2 for environmental mitigation



Sky Lupine Trail – prep for decommission



Questions?

- Contact me: Emily Podolak
 - Emily.Podolak@sonoma-county.org
 - (707) 565-6726
- Check out: The Planning Division, Active Projects page on our website for Taylor Mountain Phase II
 - <https://parks.sonomacounty.ca.gov/learn/planning-division/project-directory/all-active-projects/taylor-mountain-phase-2>

Taylor Mountain Regional Park and Open Space Phase 2 Trails Project

