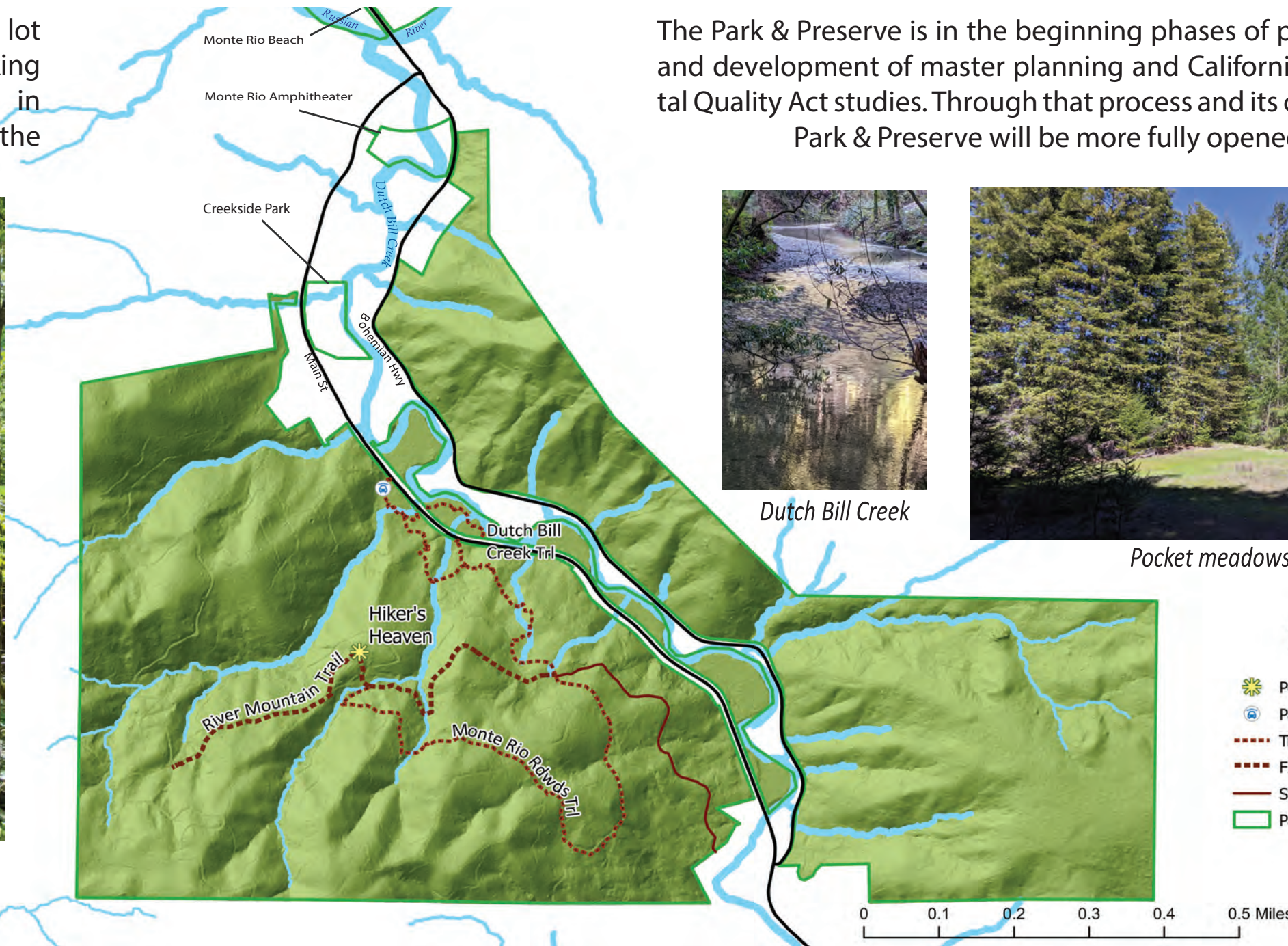


Monte Rio Redwoods Regional Park & Open Space Preserve COMING SOON

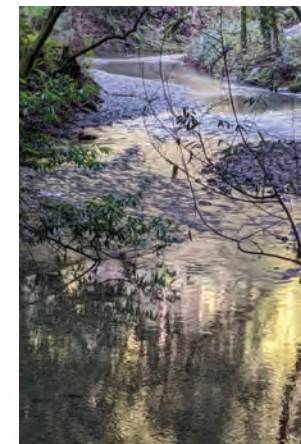
The 10-space parking lot provides off street parking access while participating in park staff guided hikes of the 1.8-mile loop trail.



Ancient redwoods and douglas-fir



The Park & Preserve is in the beginning phases of public outreach and development of master planning and California Environmental Quality Act studies. Through that process and its completion the Park & Preserve will be more fully opened to the public.



Dutch Bill Creek



Pocket meadows

Project Contact: Karen.Davis-Brown@Sonoma-County.org

Phone: (707) 565-1359

For information about master planning and community participation in the process, please visit:

<https://parks.sonomacounty.ca.gov/learn/planning-division/project-directory/all-active-projects/monte-rio-redwoods-park-and-preserve>