

# Monte Rio Redwoods

## Regional Park & Open Space Preserve



SONOMA COUNTY  
REGIONAL  
PARKS



AG +  
OPEN  
SPACE  
SONOMA COUNTY

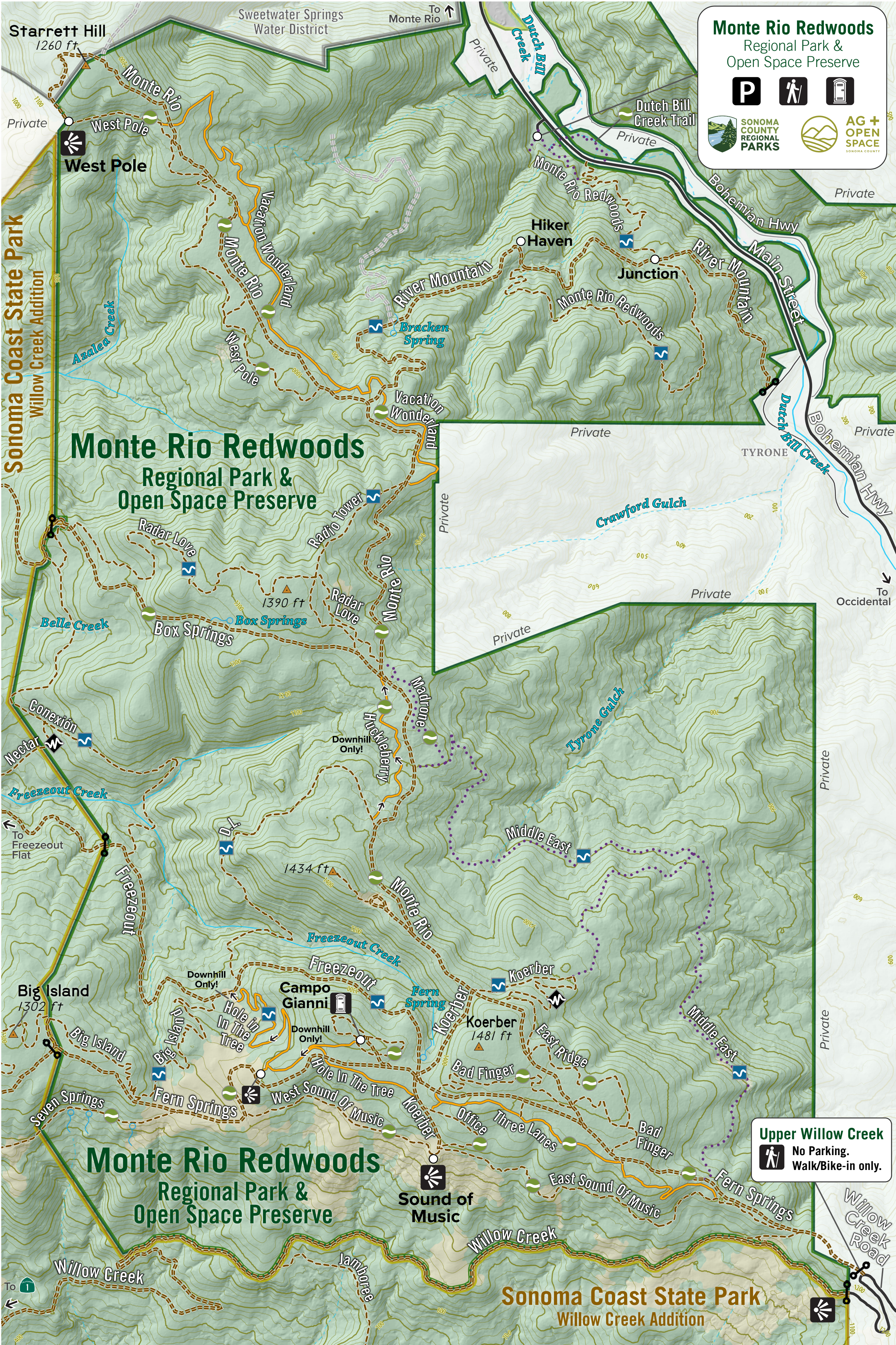
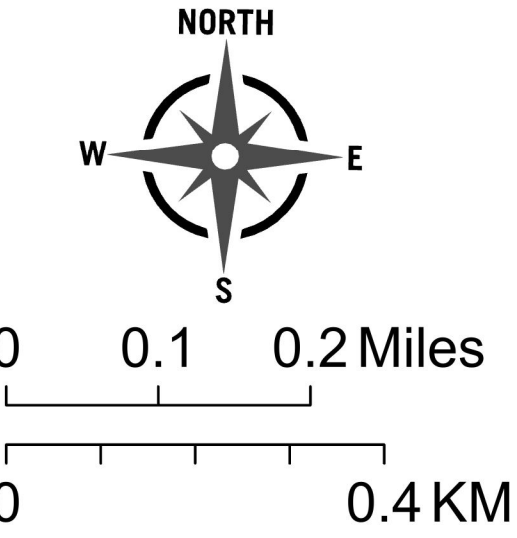
- Trailhead
- Parking
- Viewpoint
- Portable Restrooms
- Gate

- Trail: Multi-Use (Hike/Bike/Horse)
- Trail: Hike/Bike
- Trail: Bike-Only
- Trail: Hike-Only
- Service Road

### Trail Categories

- Easy:** Wide with gentle grades, even terrain and very few obstacles.
- Moderate:** Varying width, some steep grades, uneven terrain or occasional obstacles.
- Challenging:** Narrow, steep grades, rough terrain, many obstacles or technical sections.

Monte Rio Redwoods Regional Park and Open Space Preserve is located in the community of Monte Rio in western Sonoma County. The park is open for interim public access while a master plan is developed, meaning that you can visit the park now while Regional Parks works on a long-term plan to guide the development of trails, recreational and educational uses and the stewardship of natural resources. Learn more at [SoCoParks.org/MonteRio](https://SoCoParks.org/MonteRio).



### Monte Rio Redwoods

#### Regional Park & Open Space Preserve

- Parking
- Trailhead
- Viewpoint



**Upper Willow Creek**  
 No Parking.  
Walk/Bike-in only.