

# Maxwell Farms Regional Park

## Master Plan Update

### Community Workshop #1

**Wednesday, January 14, 2015**

**6:30 PM to 8:00 PM**

100 W. Verano Avenue

Boys and Girls Club, Maxwell Clubhouse

Discovery Room



Scott Wilkinson, Project Manager  
Sonoma County Regional Parks  
(707) 565-2734

[scott.wilkinson@sonoma-county.org](mailto:scott.wilkinson@sonoma-county.org)

[www.sonomacountyparks.org](http://www.sonomacountyparks.org)

# Maxwell Farms Regional Park

## Master Plan Update - Agenda

### Community Workshop #1

Wednesday, January 14, 2015

6:30 PM to 8:00 PM

6:30 Welcome and meeting purpose

6:45 Project overview and timeline

6:55 Workshop exercise at table groups:

Finish this statement: **Maxwell Farms Park is...**

Assets – positive aspects/things you like about the park

Issues & challenges – negative aspects/things that can be improved

Opportunities for change – ideas for improvements including new amenities, facilities and programs

7:25 Table groups report back session (*3-4 minutes each*)

Introduce your group and read the group's **Maxwell Farms Park is...** statement

Share your group's top 2 Assets, Issues and Opportunities

7:50 Closing discussion and next step

8:00 Meeting close

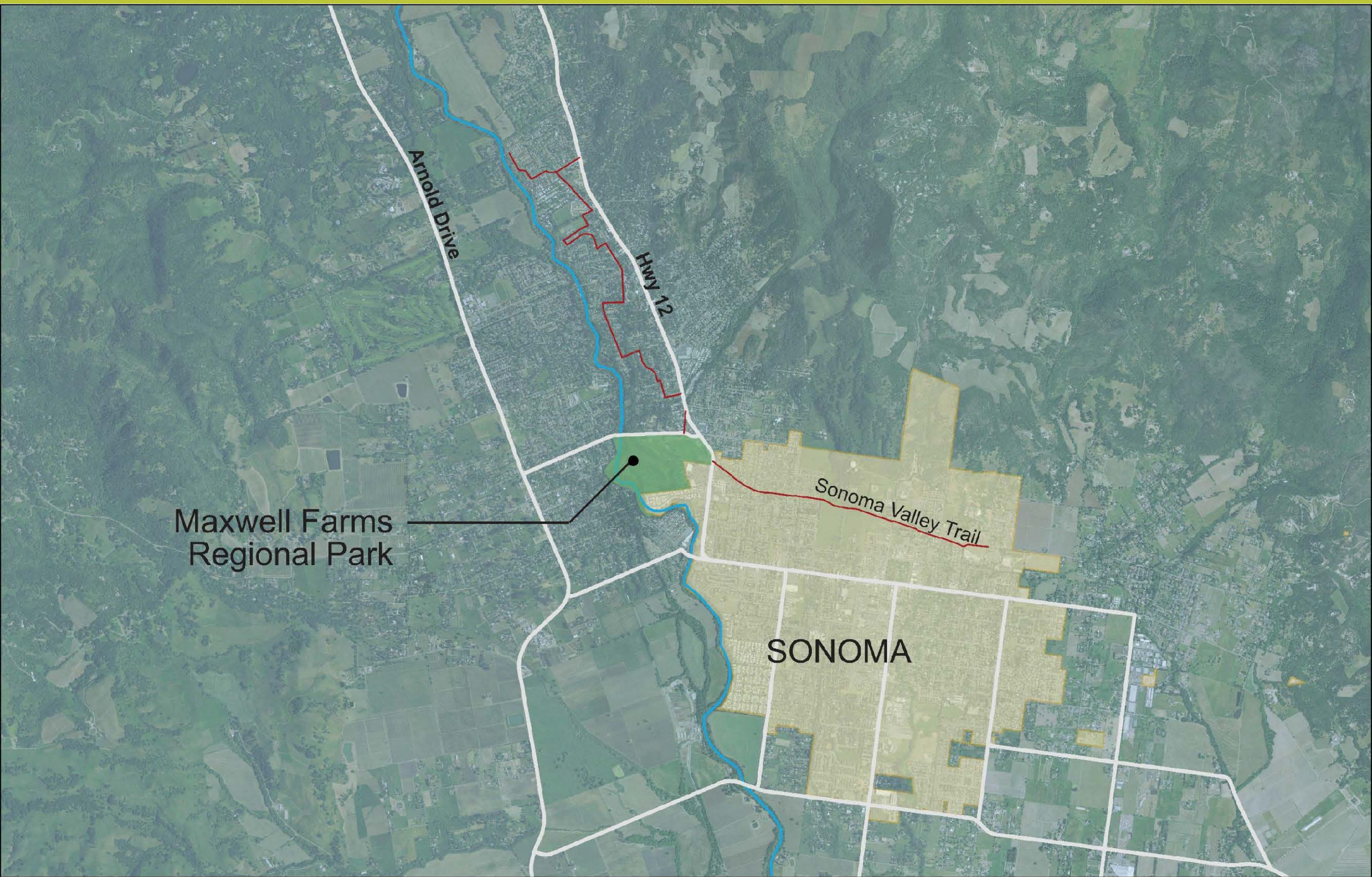
## **Planning Process:**

- Identify park assets and park features and qualities that people like.
- Evaluate the issues and challenges facing the park.
- Determine the current and future needs of the community and develop a prioritized list of park improvements including ideas for new amenities, facilities and programs.
- Review and evaluate plan alternatives
- Create a new Master Plan with a cohesive vision responsive to community needs that balances natural resource values, parking needs, and safety to create an exciting and sustainable future for the park.

## **Anticipated Timeline:**

Community Workshop #1: Plan Kick-off	<b>January 14<sup>th</sup> 2015</b>
Community Survey	<b>December – February 2015</b>
Community Workshop #2: Present Review Plan Alternatives	<b>April 2015</b>
Community Workshop #3: Present Preferred Alternative	<b>June 2015</b>
Environmental impact analysis	<b>July – October 2015</b>
County Board of Supervisors adoption of Master Plan amendment and environmental document	<b>Fall 2015</b>





Maxwell Farms  
Regional Park

Arnold Drive

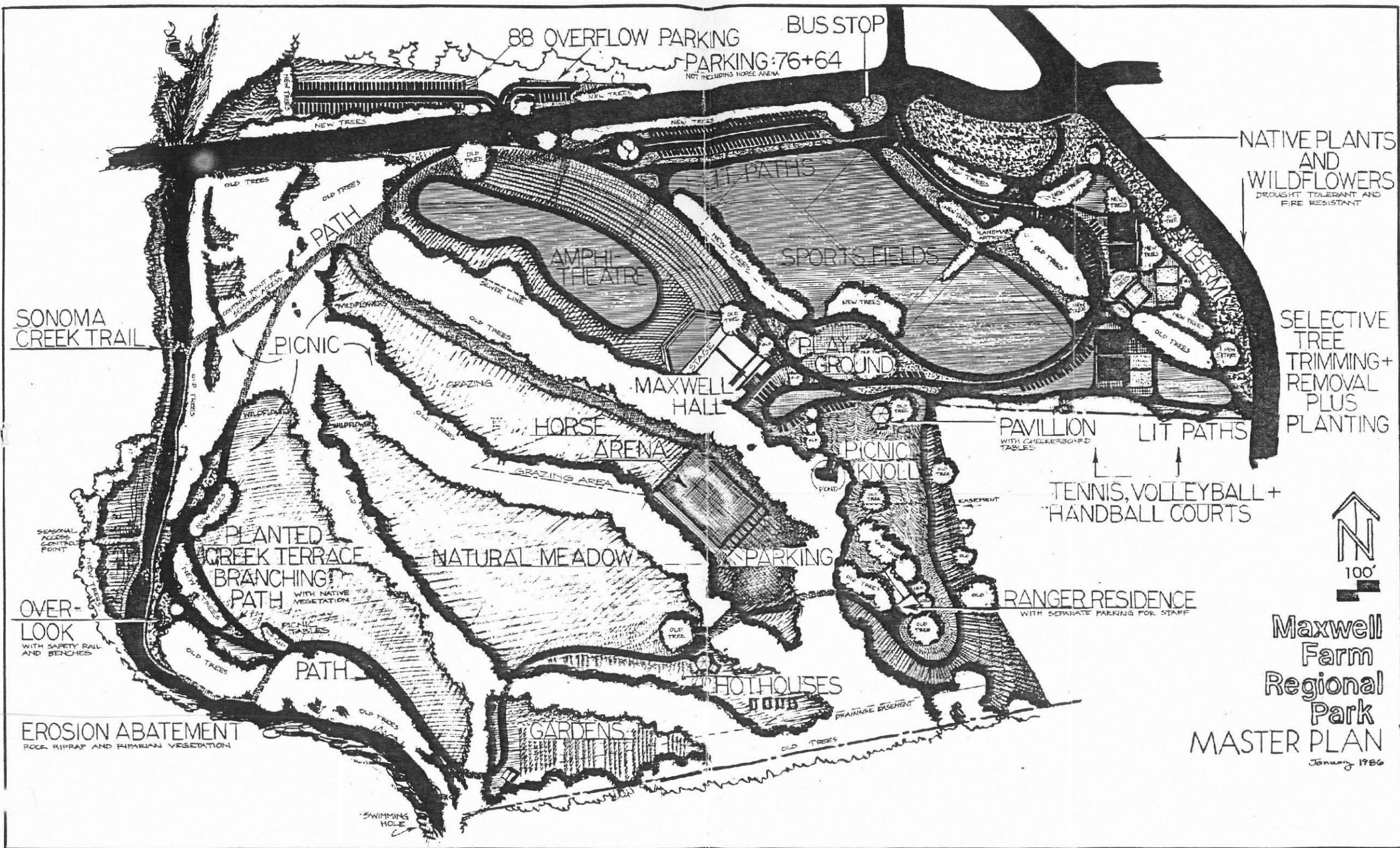
Hwy 12

Sonoma Valley Trail

SONOMA

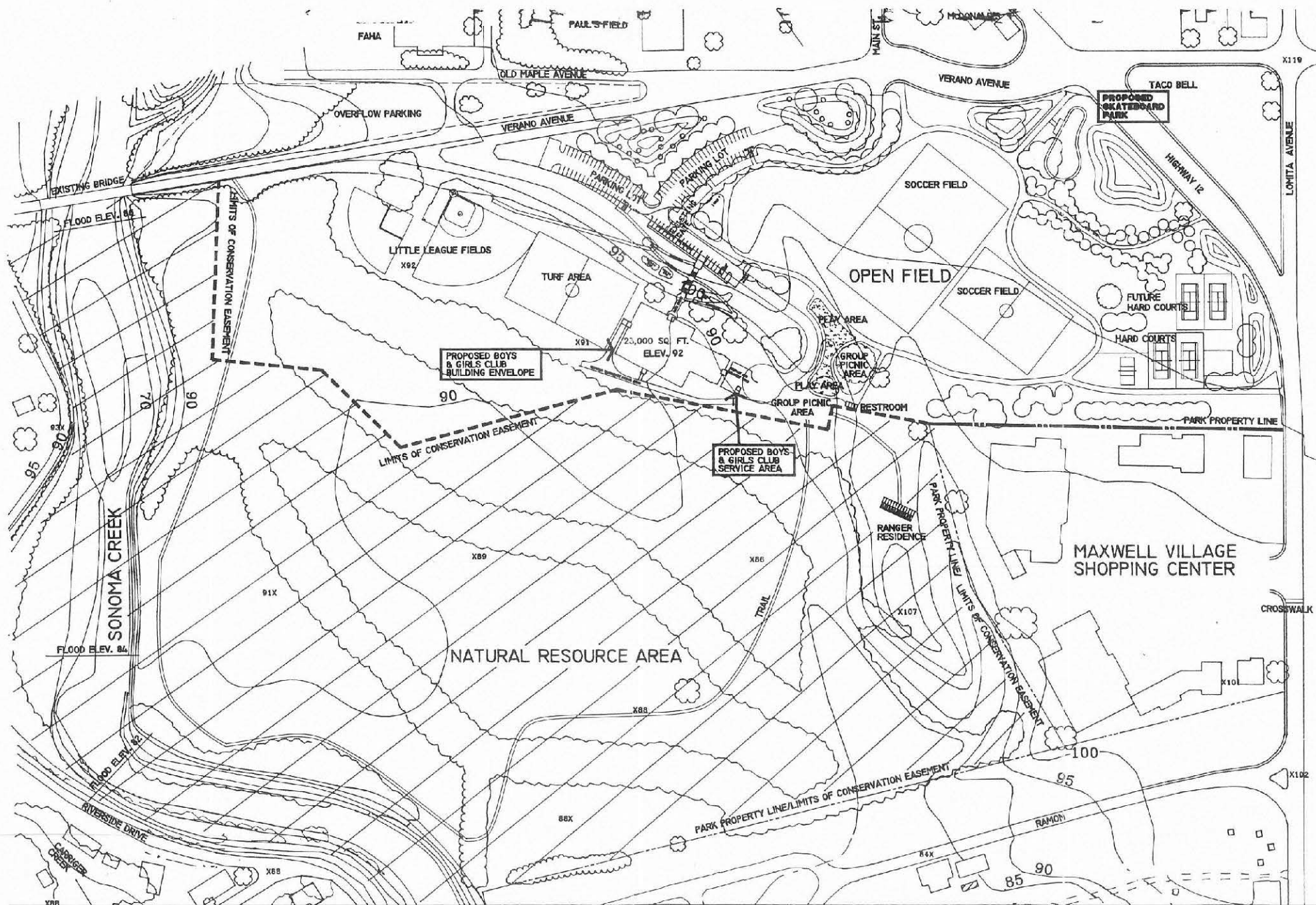
**Context Map:**





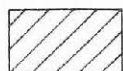
**Original Master Plan: 1987**





# PROPOSED MAXWELL FARMS REGIONAL PARK AMENDED MASTER PLAN

AUGUST 20, 1995



AREAS SUBJECT TO CONSERVATION EASEMENT



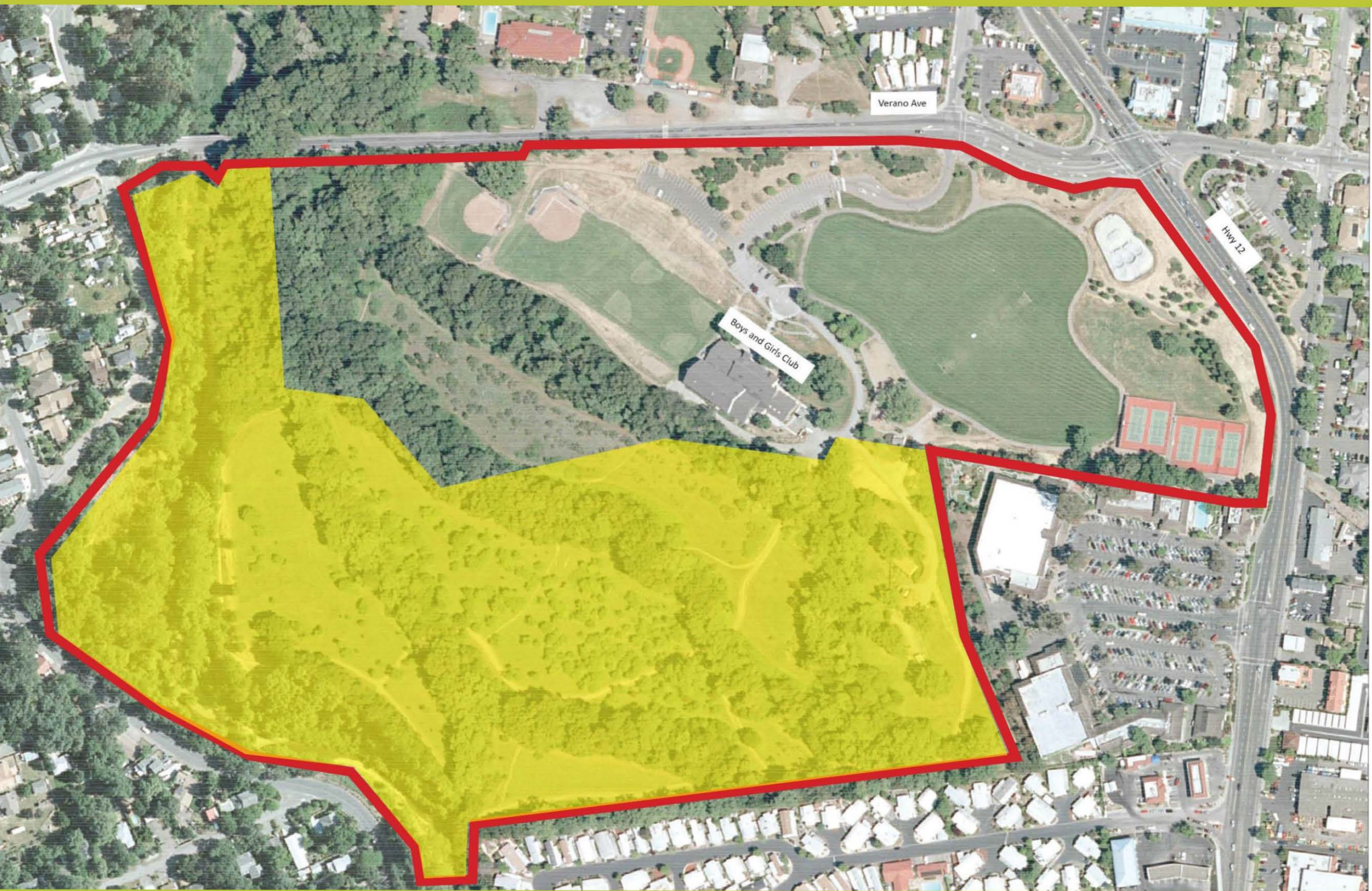
## Master Plan amendment: 1995





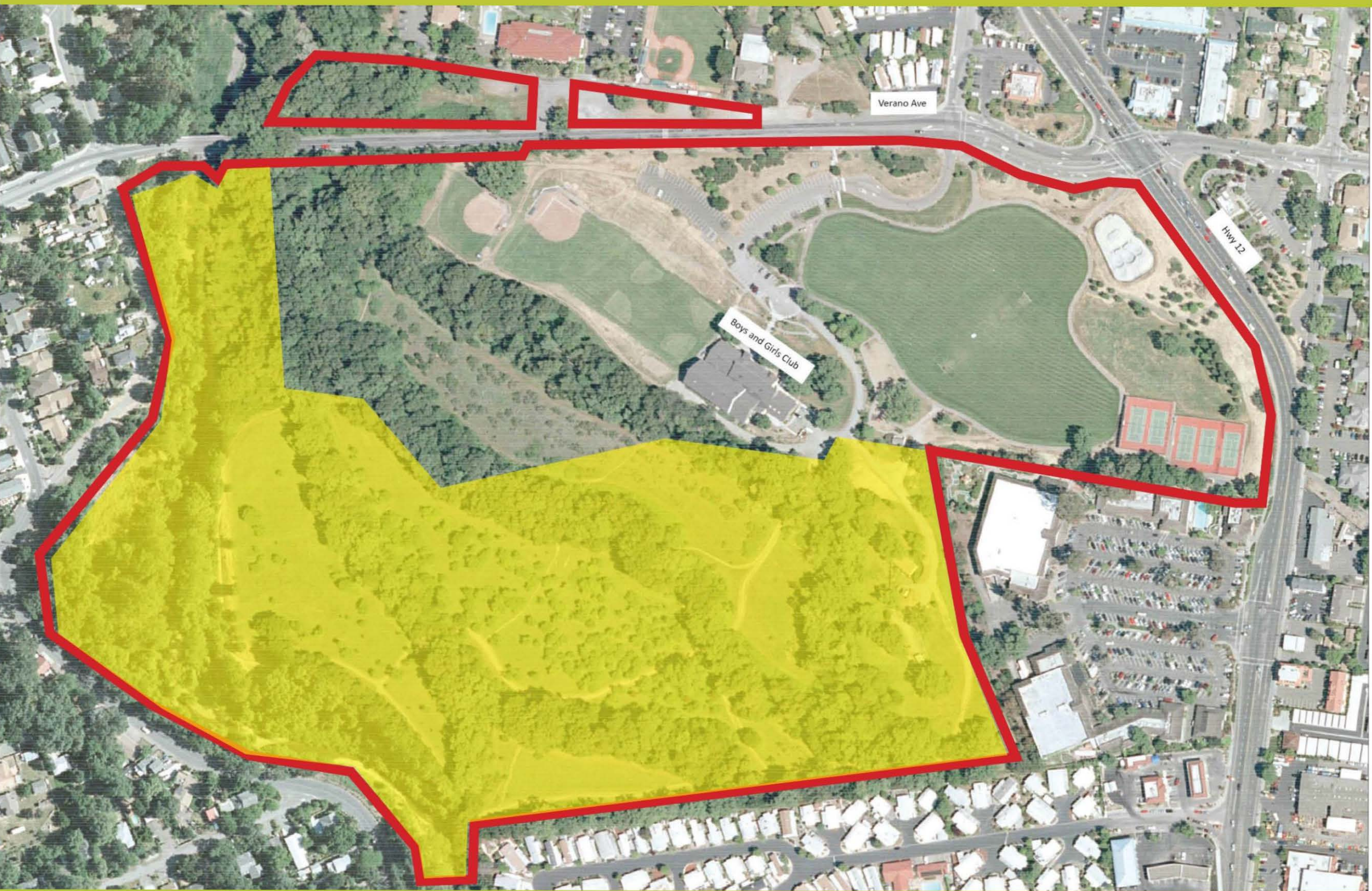
**Park boundary:**





**Conservation Easement:**





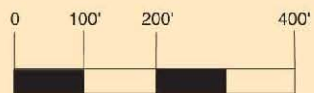
**Overflow parking parcels:**



# Maxwell Farms Regional Park

## MAP LEGEND

- DIRT PATHS
- NATURE TRAIL
- GRAVEL PATHS PEDESTRIAN CROSSING
- PAVED PATHS
- DRINKING FOUNTAIN
- WATERWAYS
- DISABLED ACCESS TRAIL
- DISABLED PARKING
- RESTROOMS
- PICNIC AREA





# Facilities previously suggested by community:

- Bike park with BMX track and/or pump track
- Off-leash dog park
- Disc golf (Frisbee) course
- Additional tennis courts
- Picnic areas w/ shade
- Additional / improved athletic fields
- Sonoma Creek interpretation program
- Community garden
- Additional / improved parking accommodations



# **Anticipated Timeline:**

Community Workshop #1: Plan Kick-off	<b>January 14<sup>th</sup> 2015</b>
Community Survey	<b>December – February 2015</b>
Community Workshop #2: Present Review Plan Alternatives	<b>April 2015</b>
Community Workshop #3: Present Preferred Alternative	<b>June 2015</b>
Environmental impact analysis	<b>July – October 2015</b>
County Board of Supervisors adoption of Master Plan amendment and environmental document	<b>Fall 2015</b>



# Maxwell Farms Regional Park

## MAP LEGEND

- DIRT PATHS
- NATURE TRAIL
- GRAVEL PATHS
- PEDESTRIAN CROSSING
- PAVED PATHS
- DRINKING FOUNTAIN
- WATERWAYS
- DISABLED ACCESS TRAIL
- DISABLED PARKING
- RESTROOMS
- PICNIC AREA



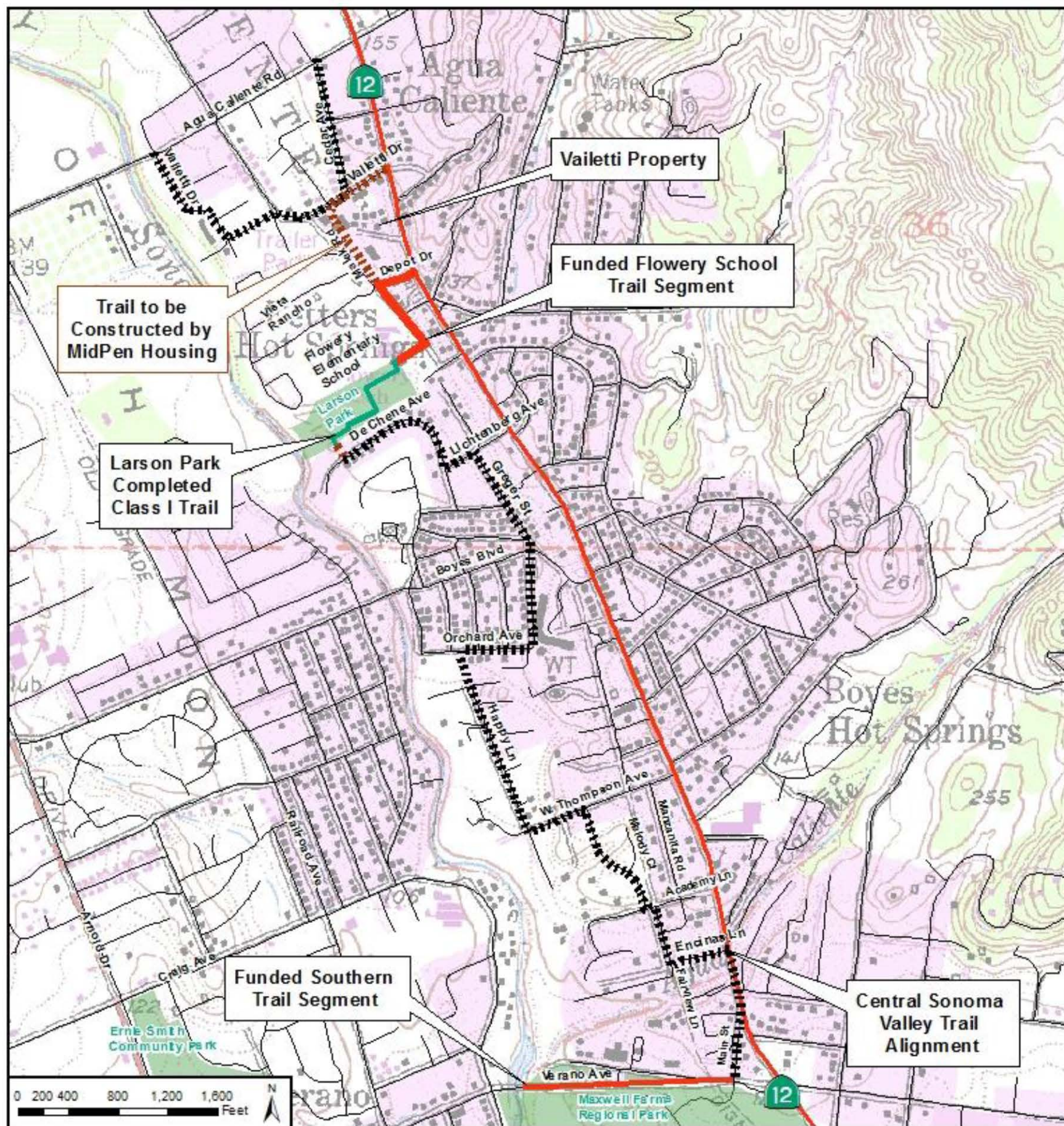












# **Central Sonoma Valley Trail Project Location Map**

*Sonoma County  
Regional Parks*



Source: Sonoma County ISD (GIS)  
 c:\Project\Central Sonoma Valley Trail\Arc\Central So. Valley Trail 4 panel (KOD) 4-14-14

Enlarged View to Left

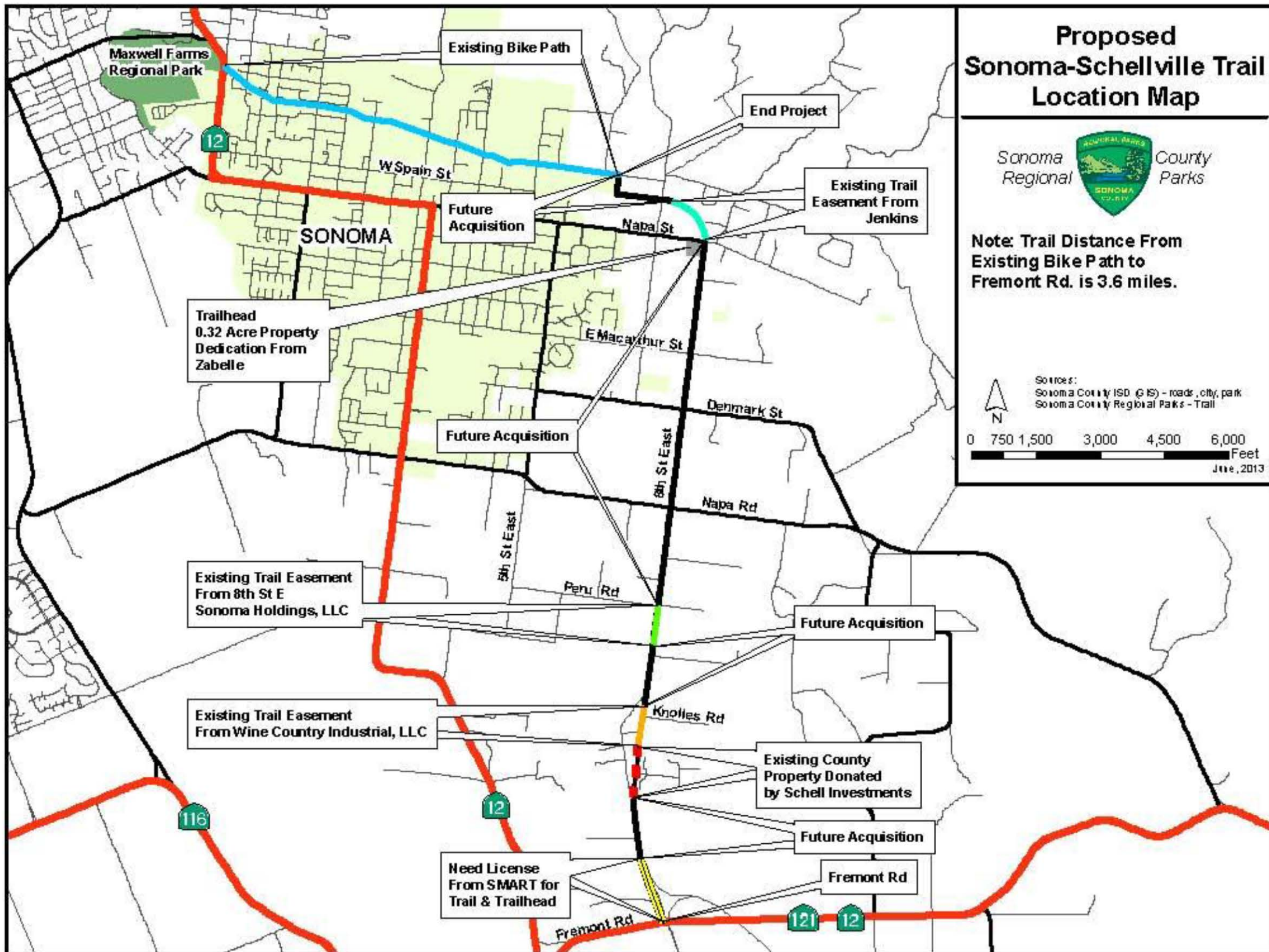


Sonoma County  
Location Map

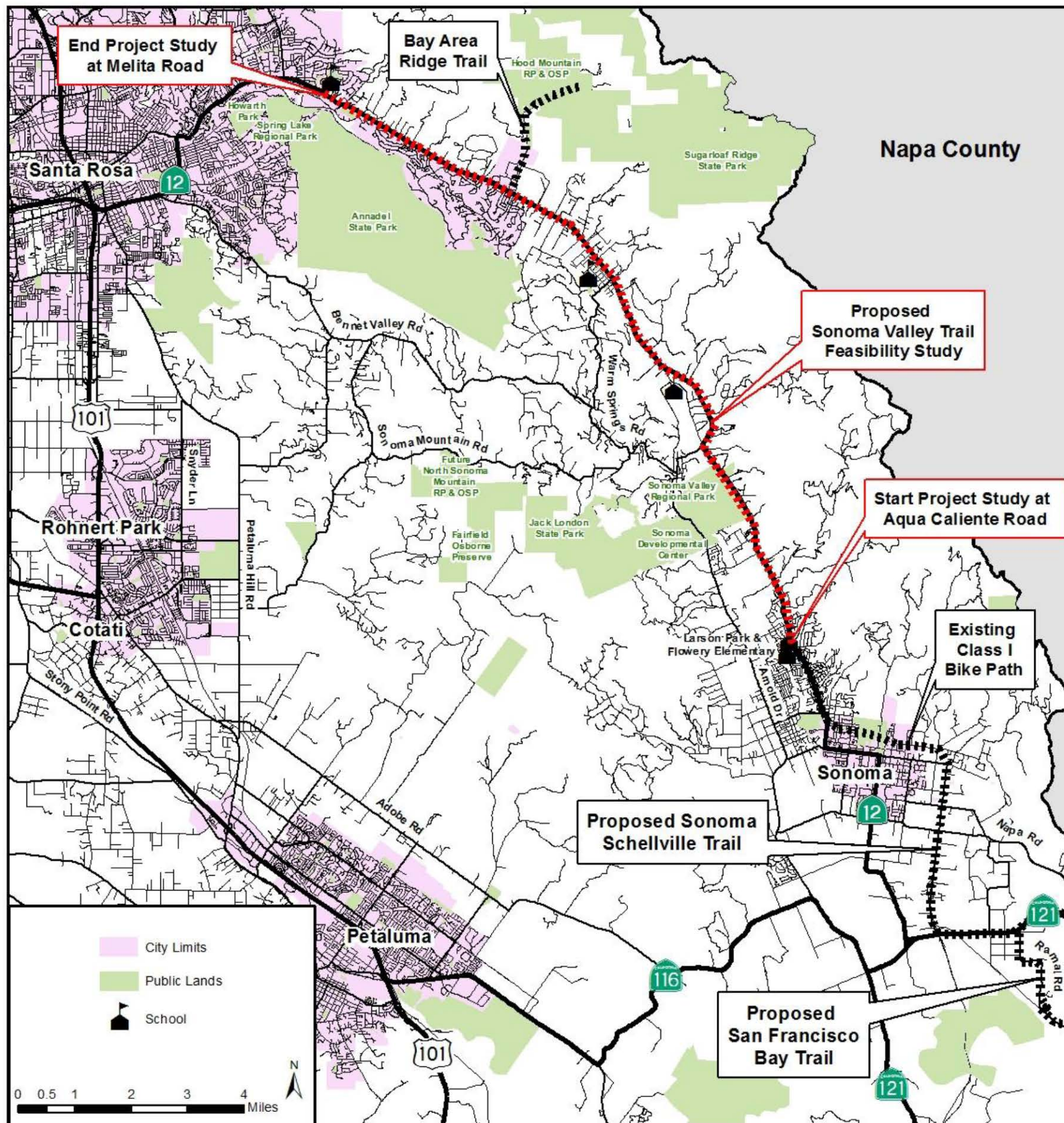


Bay Area  
Location Map









## Sonoma Valley Trail Project Location Map

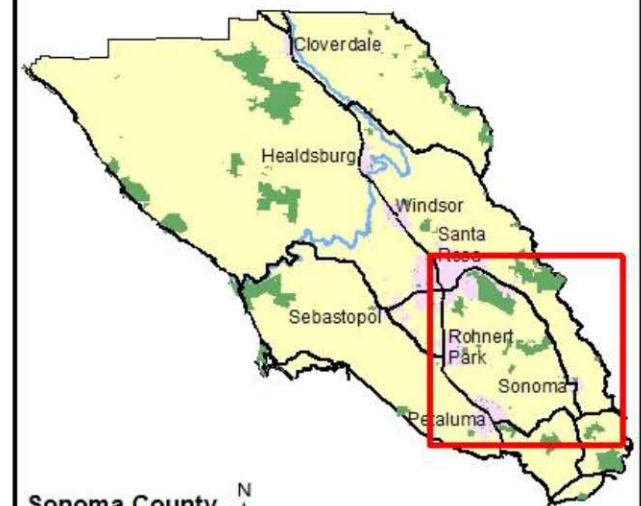
Sonoma County  
Regional Parks



Source: Sonoma County ISD (GIS)  
c:\Project\SonomaVly\AraSo. to SR 4 panel (KDB)

4-14-14

Enlarged View to Left



Sonoma County  
Location Map

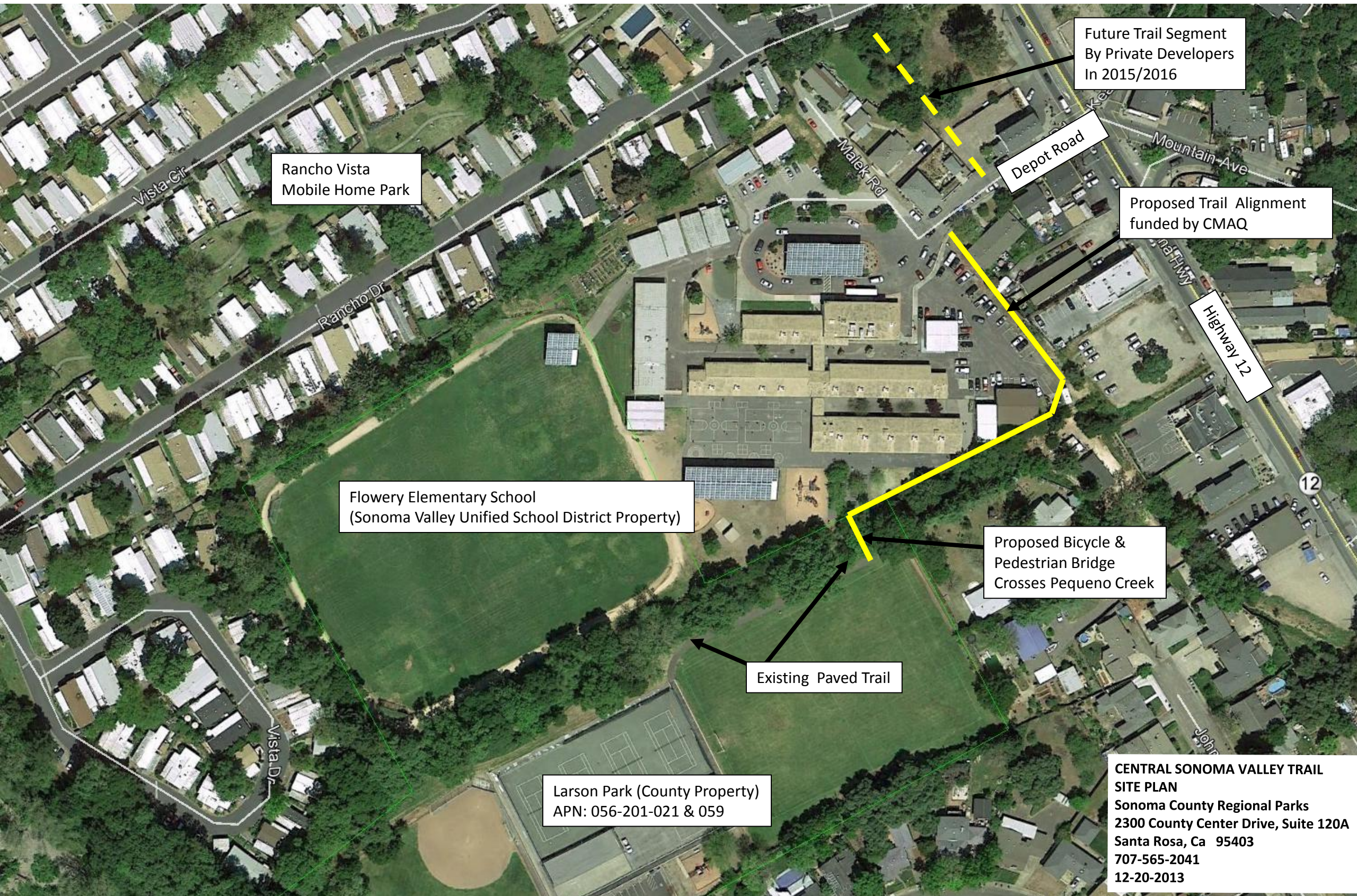








# Flowery School Trail Segment



Future Trail Segment  
By Private Developers  
In 2015/2016

Depot Road

Proposed Trail Alignment  
funded by CMAQ

Highway 12

Rancho Vista  
Mobile Home Park

Flowery Elementary School  
(Sonoma Valley Unified School District Property)

Proposed Bicycle &  
Pedestrian Bridge  
Crosses Pequeno Creek

Existing Paved Trail

Larson Park (County Property)  
APN: 056-201-021 & 059

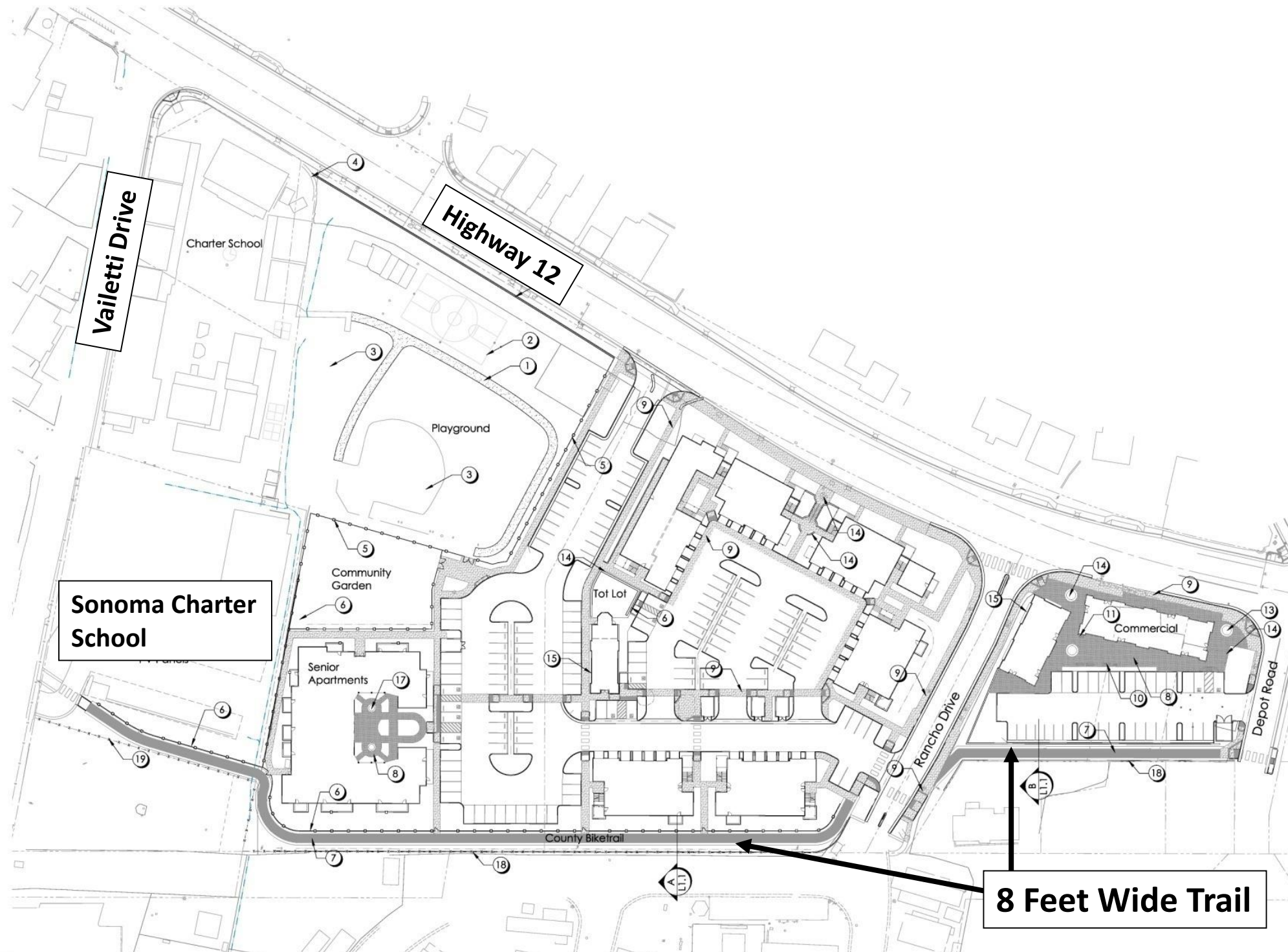
**CENTRAL SONOMA VALLEY TRAIL  
SITE PLAN**  
Sonoma County Regional Parks  
2300 County Center Drive, Suite 120A  
Santa Rosa, Ca 95403  
707-565-2041  
12-20-2013



# Sonoma Charter School – Valetti Property Trail Segment

## MASTER PLAN LEGEND

- ① Decomposed Granite Path See- C/1.2
- ② Asphaltic Concrete Basketball Court With New Basketball Goals and Hoops
- ③ Existing Play Area to Remain
- ④ Existing Wall Along Highway 12 to Remain
- ⑤ 5'-0" Non-Climb Chainlink Fence See Detail E/1.2
- ⑥ 4'-6" Welded Wire Fence With Wood Posts See Detail C/1.1
- ⑦ County Biketrail - 8'-0" AC Path with 2'-0" Shoulders
- ⑧ Special Concrete with integral color
- ⑨ Concrete Walkway - Medium Broom Finish
- ⑩ 6'-0" Steel Benches- Wabash Courtyard Series- see sheet F/1.2
- ⑪ Trash/Recycle Receptacle - Urbanscape vinyl Coated Steel Receptacle , Surface Mount, See Sheet H/ 1.2
- ⑫ Bike Bollard - Surface Mount, See Sheet ##
- ⑬ Raised Concrete planters Cast In Place Concrete- See Sheet G/1.2
- ⑭ Cast in Place Seatwall
- ⑮ Concrete Block Planters
- ⑯ 6'-0" Cement Plaster Wall- color to match existing wall on Highway 12 . See Detail A/1.2
- ⑰ Fountain - To Be Determined
- ⑱ 6'-0" Wood Fence installed on retaining wall See Detail D/1.2
- ⑲ 6'-0" Wood Fence See Detail D/1.2



Landscape Materials  
Sonoma Springs Masterplan

L1.0

MidPen  
Quadriga Landscape Architecture  
12-12-13  
Scale: 1"=40'-0"